



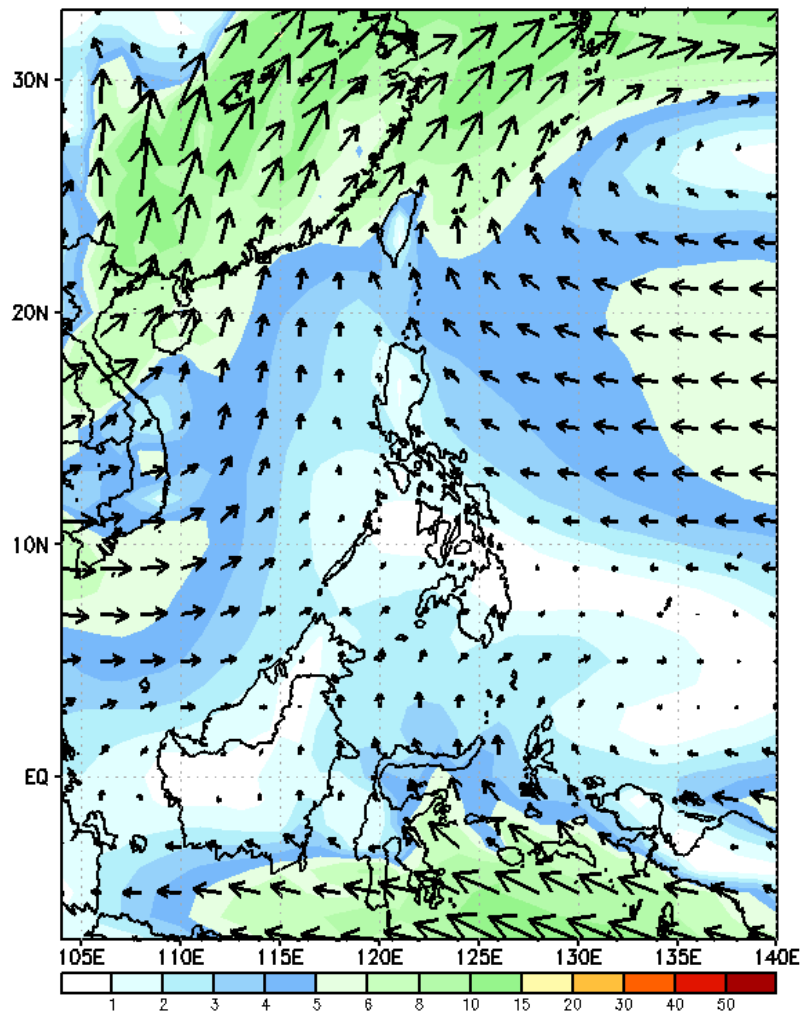
Week 1 & Week 2 Forecast for the Philippines using GEFS Model



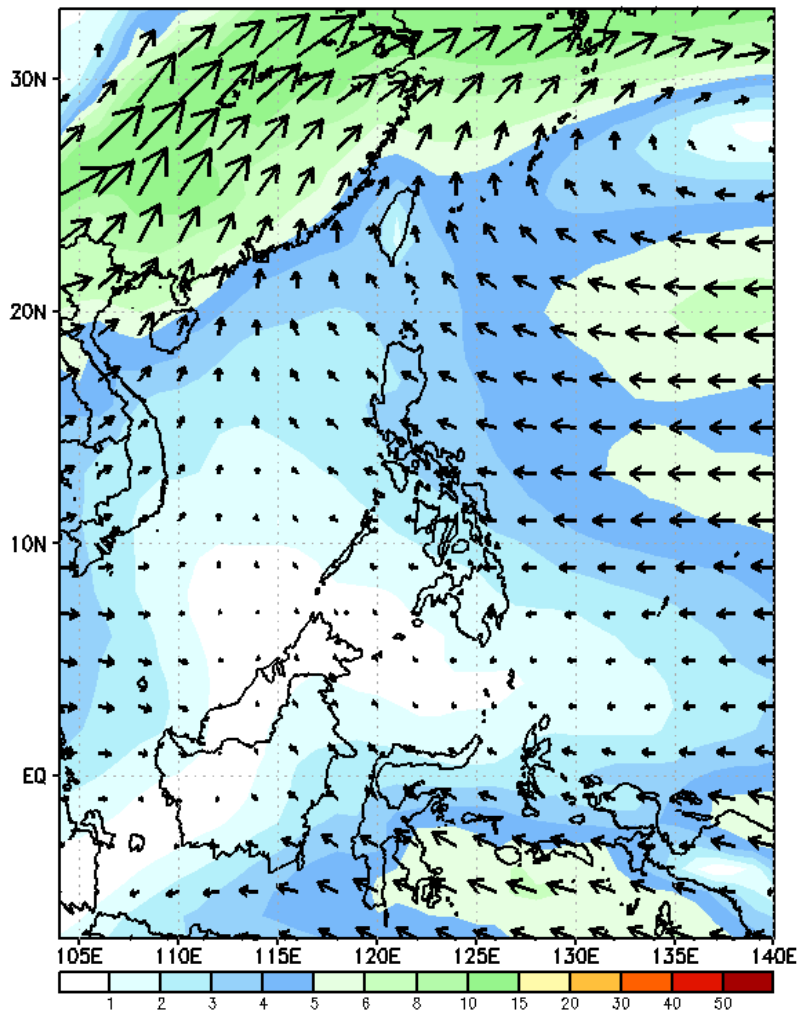
GEFS Week-1 Wind Forecasts:

Week 1: Jul 05-11, 2024

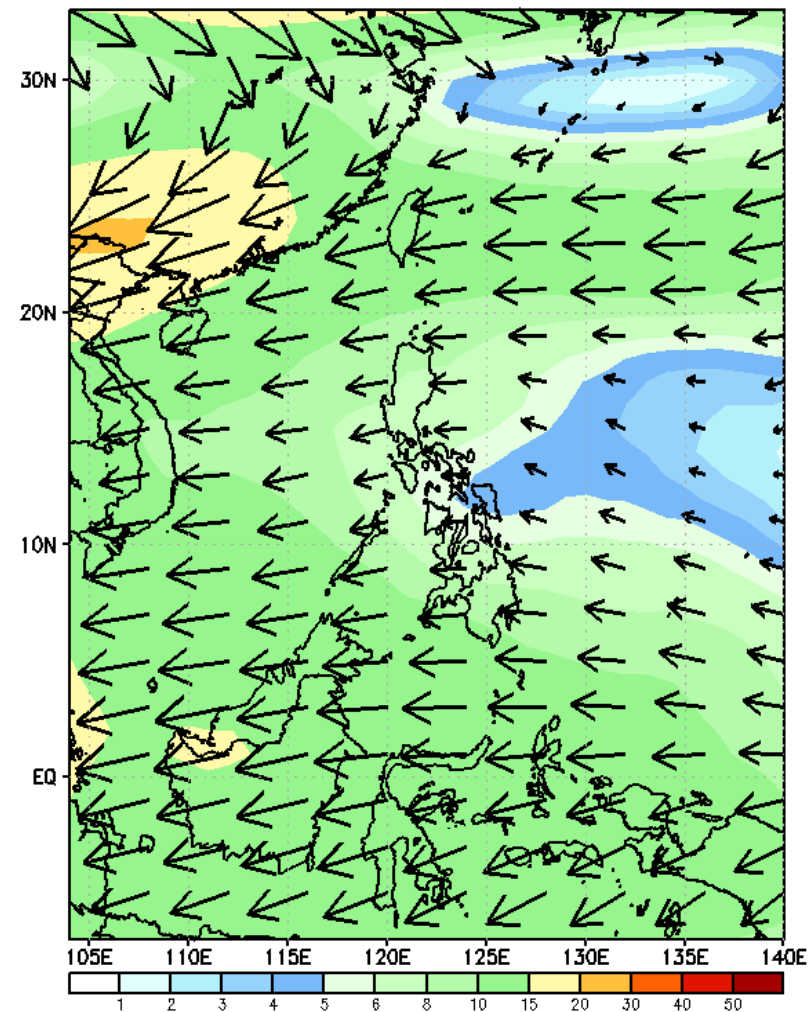
GEFS Week-1 850-hPa Wind Total
Valid: 20240705 - 20240711



GEFS Week-1 700-hPa Wind Total
Valid: 20240705 - 20240711

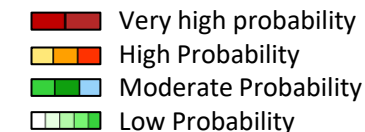


GEFS Week-1 200-hPa Wind Total
Valid: 20240705 - 20240711



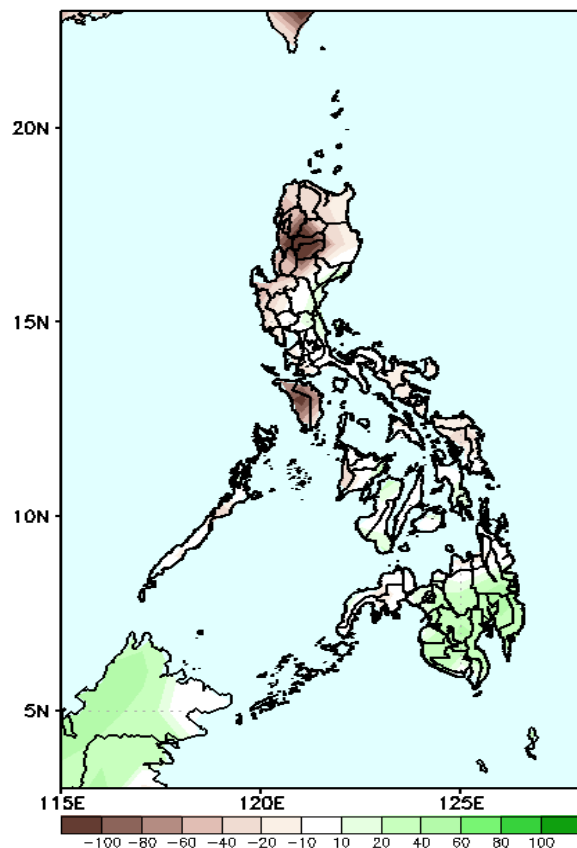
Southwest Monsoon affecting some parts of Western Luzon and Western Visayas while Easterlies affecting the rest of the country during the forecast period

Precipitation Anomaly and Exceedance Probability > 25/50 mm

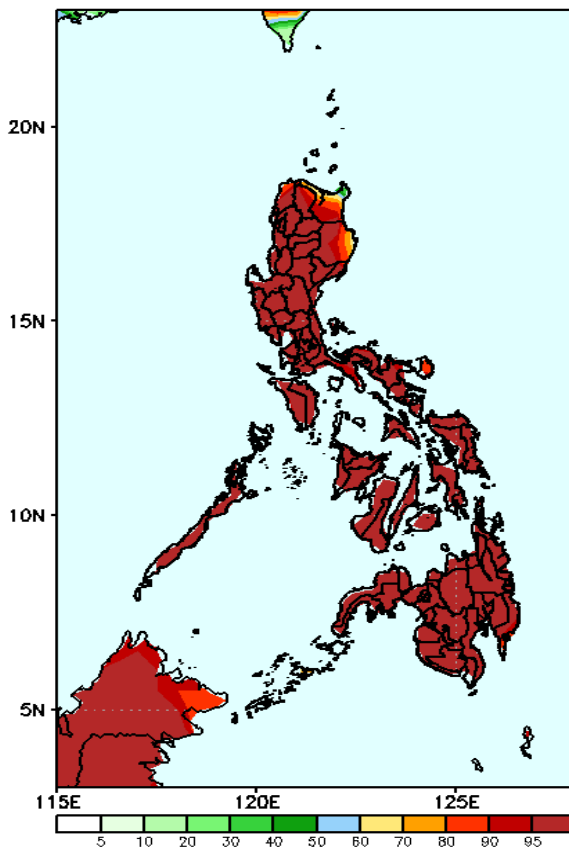


Week 1: Jul 05-11, 2024

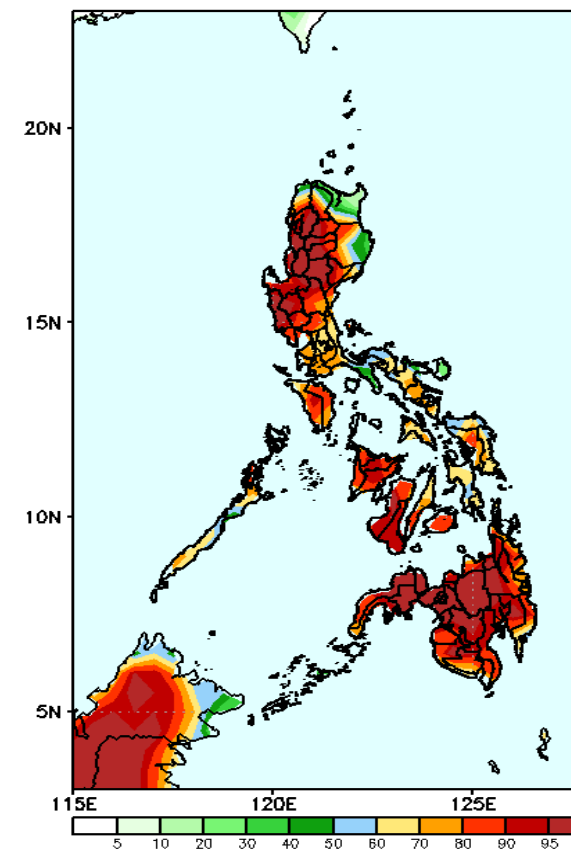
GEFS Week-1 Precip Anomaly
Valid: 20240705 - 20240711



GEFS Week-1 Exceedance Prob. > 25mm
Valid: 20240705 - 20240711



GEFS Week-1 Exceedance Prob. > 50mm
Valid: 20240705 - 20240711



Rainfall deficit of more than 100mm in CAR and Mindoro; 20-60mm over the rest of Luzon, Visayas, and northern part of Mindanao while 20-60mm increase of rainfall will be likely for the rest of Mindanao .

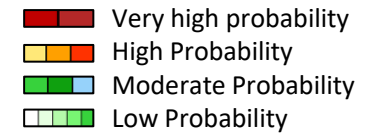
Probability to Exceed 25mm

- High to very high over most parts of the country;
- Moderate to high over Cagayan;

Probability to Exceed 50mm

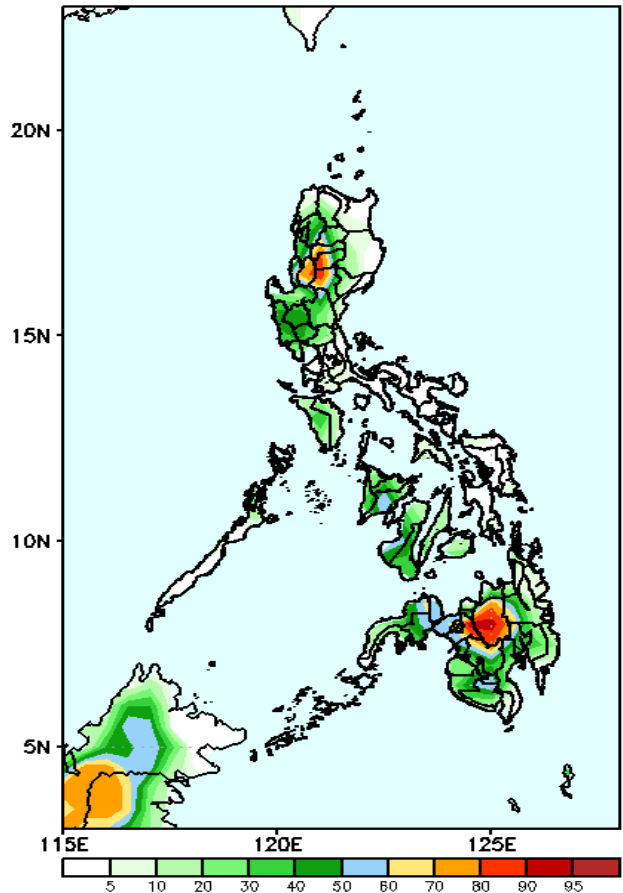
- High to very high over most parts of CAR, La Union, Nueva Vizcaya, Western Visayas, Negros Region and most of Mindanao;
- Moderate to high over the rest of the country;
- Low to moderate over Cagayan, Isabela and Catanduanes.

Exceedance Probability > 100/150/200 mm



Week 1: Jul 05-11, 2024

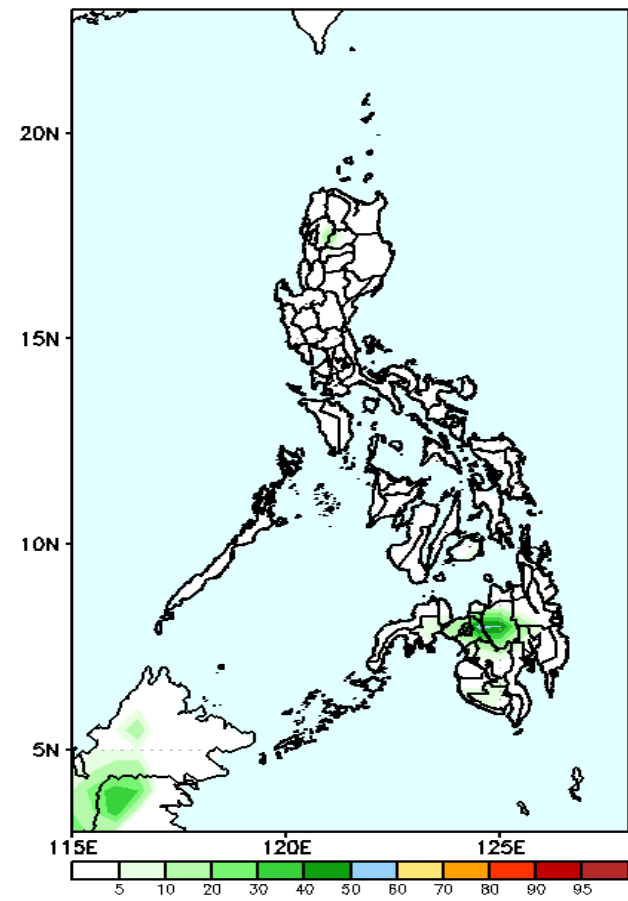
GEFS Week-1 Exceedance Prob. > 100mm
Valid: 20240705 - 20240711



Probability to Exceed 100mm

- Moderate to high over Ifugao, Mountain Province, Benguet, Nueva Vizcaya, Bukidnon and Lanao provinces;
- Low to moderate over Western Visayas, Negros Region, and the rest of Mindanao;
- Low over the rest of the country.

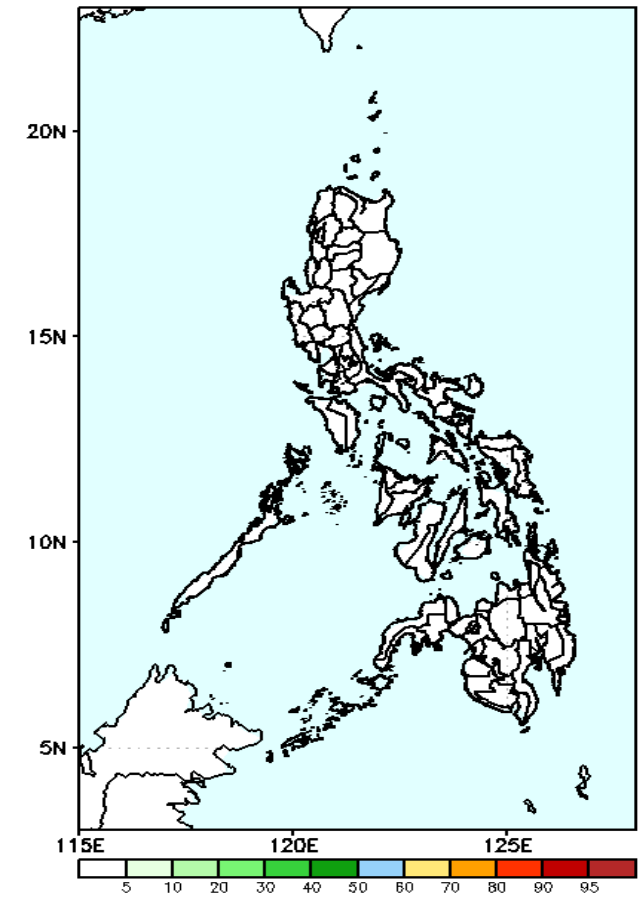
GEFS Week-1 Exceedance Prob. > 150mm
Valid: 20240705 - 20240711



Probability to Exceed 150mm

- Low across the country.

GEFS Week-1 Exceedance Prob. > 200mm
Valid: 20240705 - 20240711



Probability to Exceed 200mm

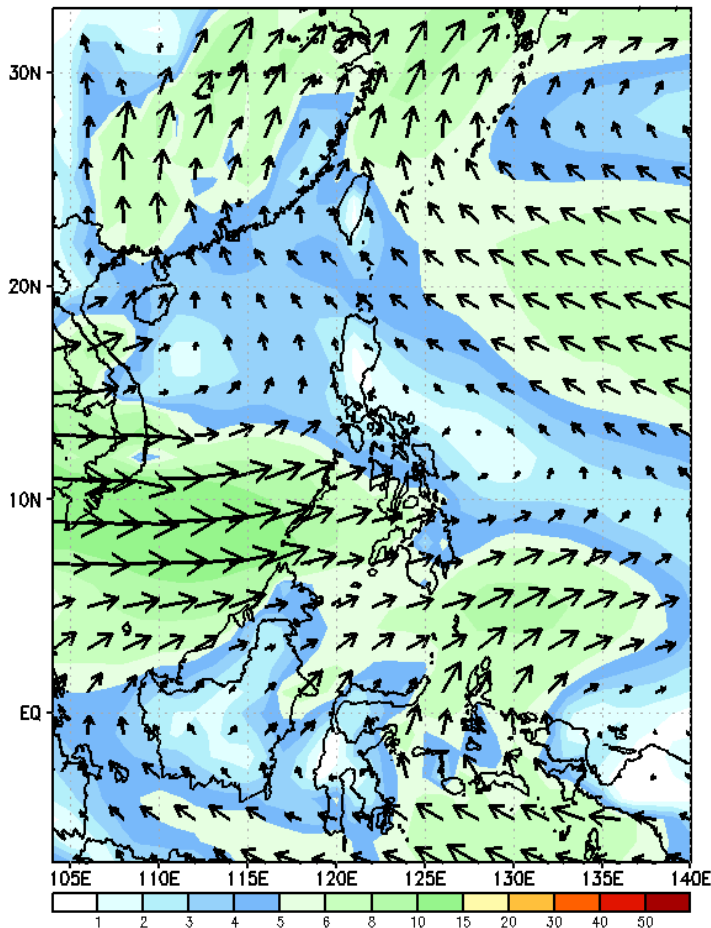
- Low across the country.



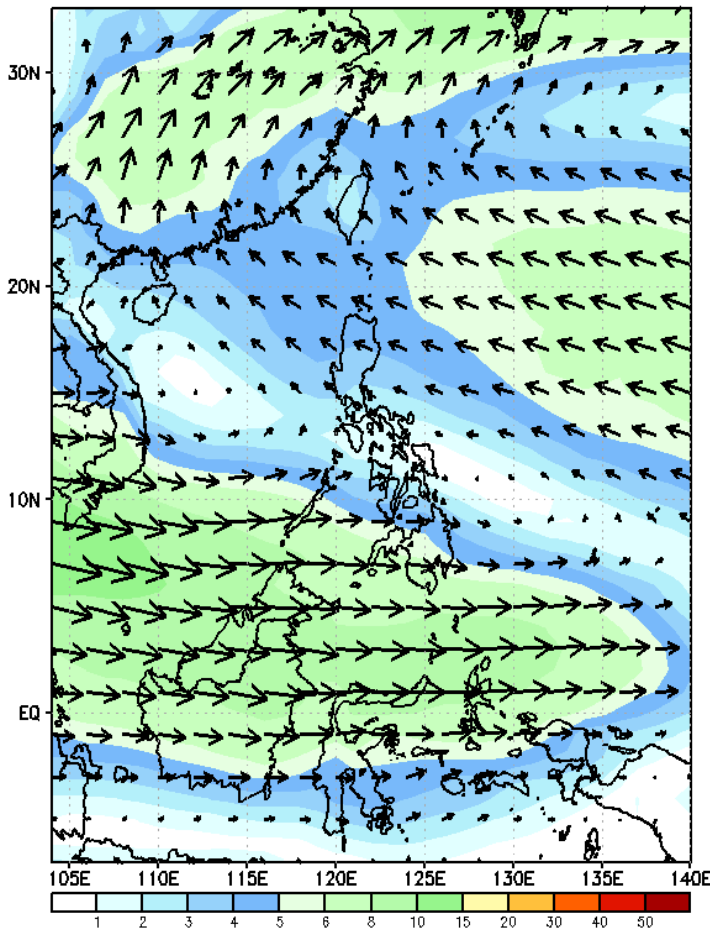
GEFS Week-2 Wind Forecasts:

Week 2: Jul 12-18, 2024

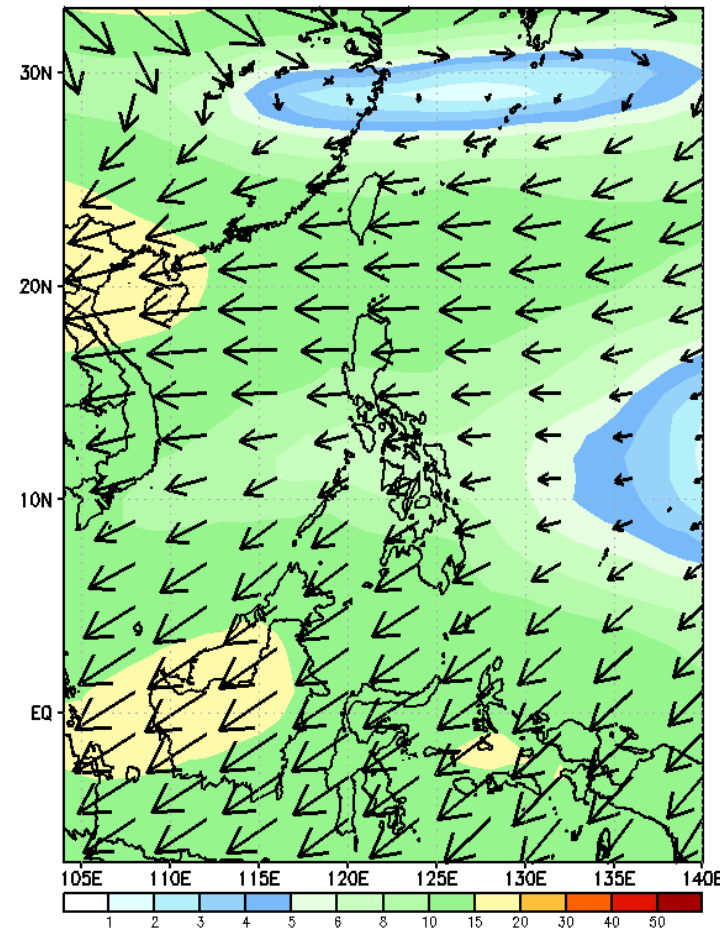
GEFS Week-2 850-hPa Wind Total
Valid: 20240712 - 20240718



GEFS Week-2 700-hPa Wind Total
Valid: 20240712 - 20240718



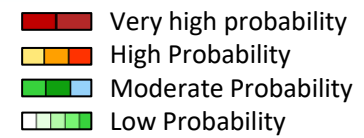
GEFS Week-2 200-hPa Wind Total
Valid: 20240712 - 20240718



Southwest Monsoon affecting the western sections of the country while Easterlies affecting the rest of the country during the forecast period

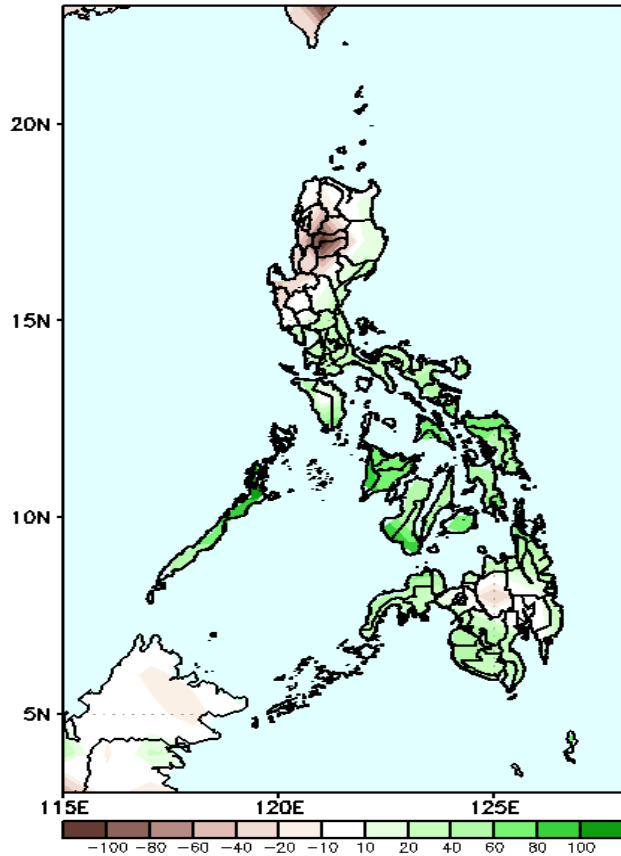


Precipitation Anomaly and Exceedance Probability > 25/50 mm



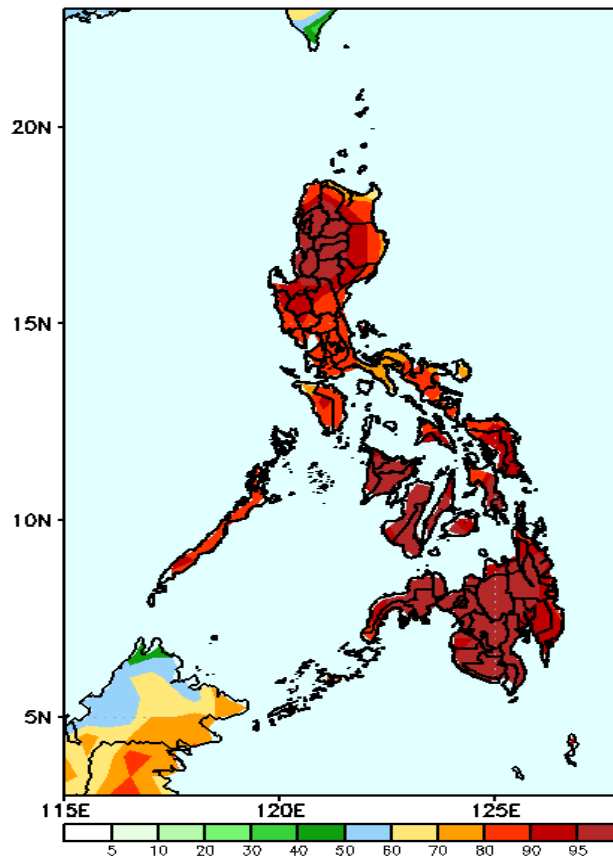
Week 2: Jul 12-18, 2024

GEFS Week-2 Precip Anomaly
Valid: 20240712 - 20240718



Rainfall deficit of 20-60mm in most parts of CAR, most of Western Luzon while 20-60mm increase of rainfall will be likely over the rest of the country is expected.

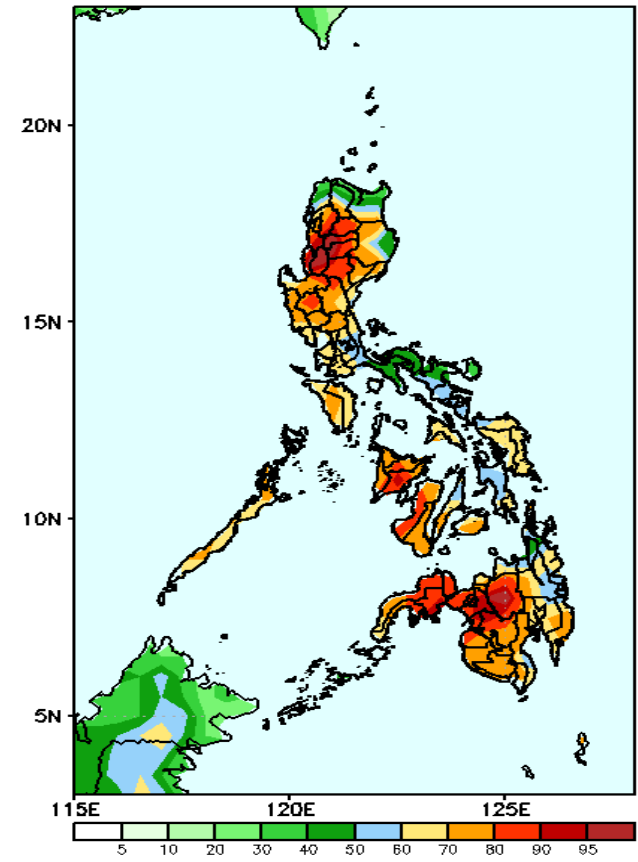
GEFS Week-2 Exceedance Prob. > 25mm
Valid: 20240712 - 20240718



Probability to Exceed 25mm

- High to very high across the country

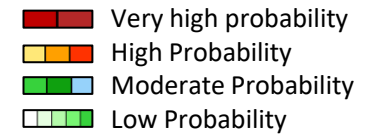
GEFS Week-2 Exceedance Prob. > 50mm
Valid: 20240712 - 20240718



Probability to Exceed 50mm

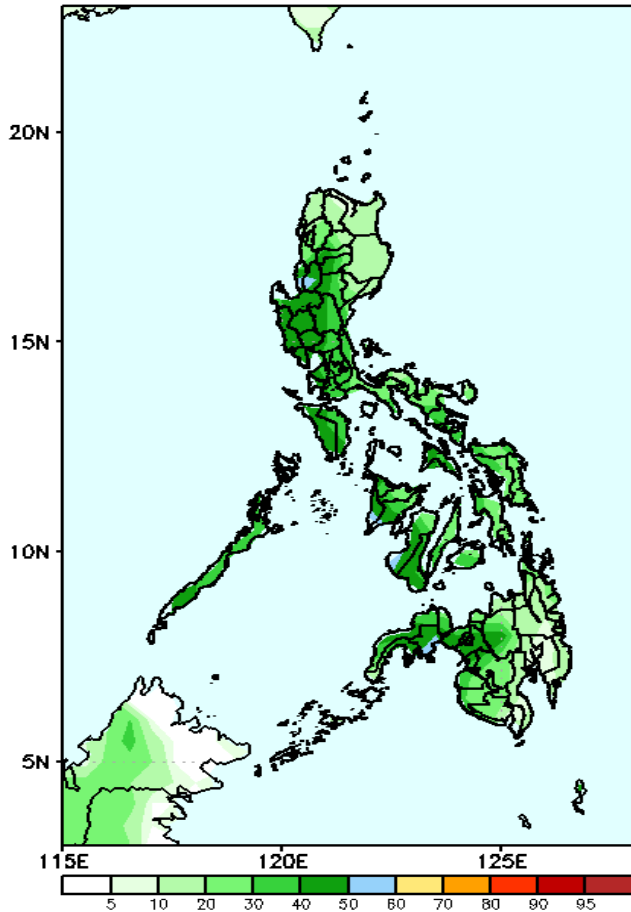
- High to very high over most of CAR, Ilocos Sur, La Union, Nueva Vizcaya and Central and Western Mindanao;
- Moderate to high over the rest of the country.

Exceedance Probability > 100/150/200 mm



Week 2: Jul 12-18, 2024

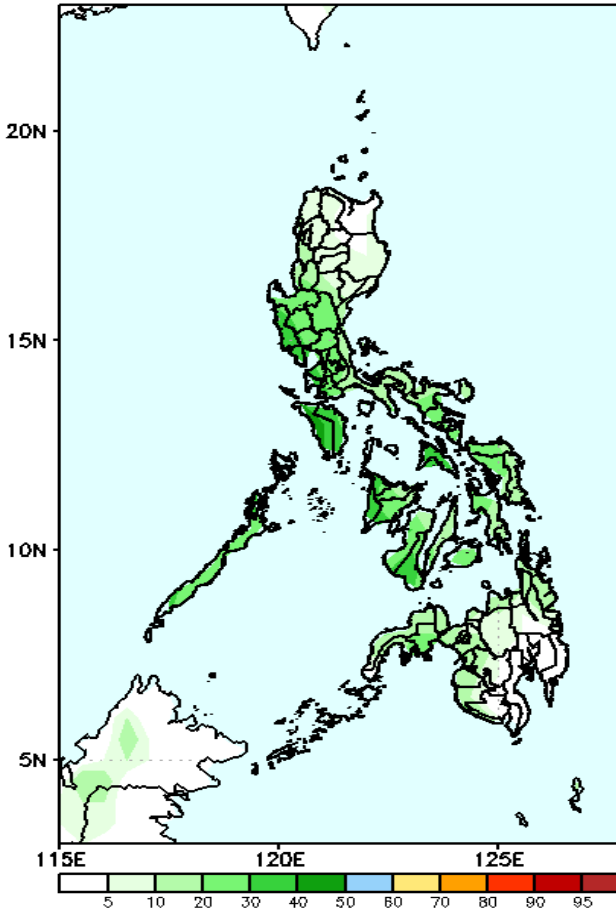
GEFS Week-2 Exceedance Prob. > 100mm
Valid: 20240712 - 20240718



Probability to Exceed 100mm

- Moderate to high over Western Visayas, Negros Region and Zamboanga Peninsula;
- Low to moderate over the rest of the country.

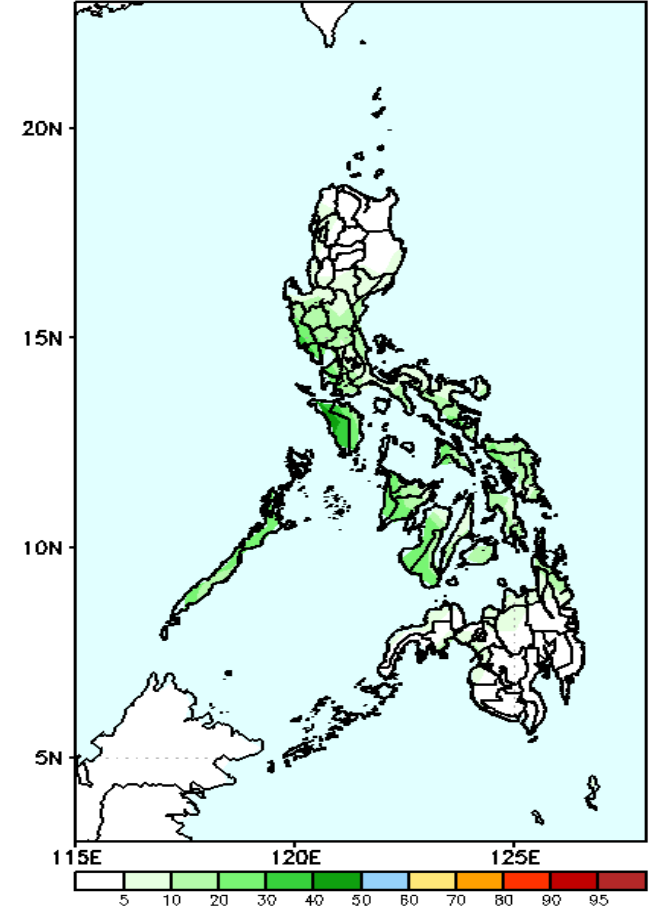
GEFS Week-2 Exceedance Prob. > 150mm
Valid: 20240712 - 20240718



Probability to Exceed 150mm

- Low to moderate across the country.

GEFS Week-2 Exceedance Prob. > 200mm
Valid: 20240712 - 20240718

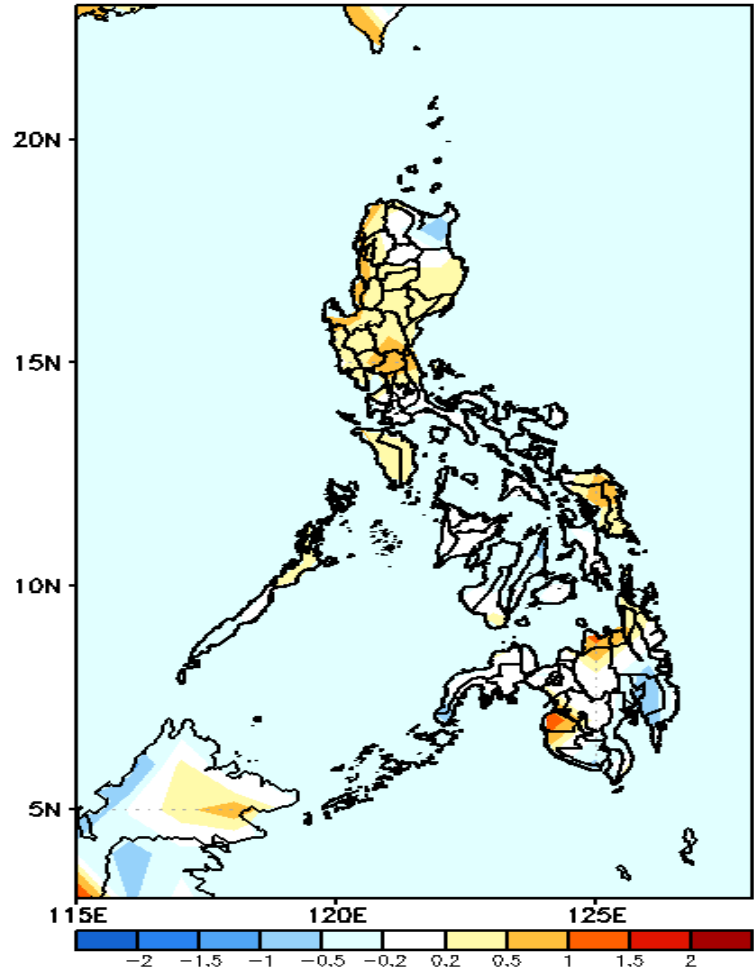


Probability to Exceed 200mm

- Low across the country.

GEFS Week-1 & 2 Forecasts: T2m Anomaly

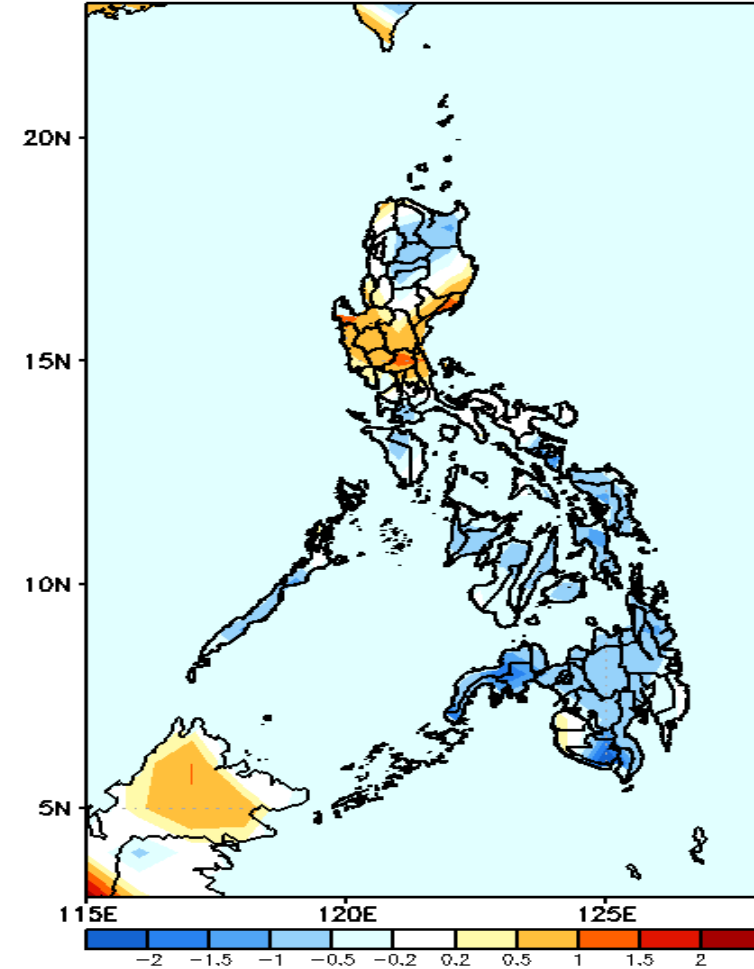
GEFS Week-1 T2m Anomaly
Valid: 20240705 - 20240711



2m Temperature Week 1: Jul 05-11, 2024

Near to slightly warmer than average surface air temperature will likely be experienced in most parts of the country except in Maguindanao (warmer) and Davao Region (slightly cooler temperature).

GEFS Week-2 T2m Anomaly
Valid: 20240712 - 20240718



2m Temperature Week 2: Jul 12-18, 2024

Near to cooler surface air temperature will likely be experienced in most parts of the country except in Central Luzon, Quirino, and northern Quezon where slightly warmer to warmer than average temperature is expected.